

2023 Hire Charges (including VAT)

Standard packages	Package price
Wedding Reception	£1200
Evening Party	£275
Children's Party	£120

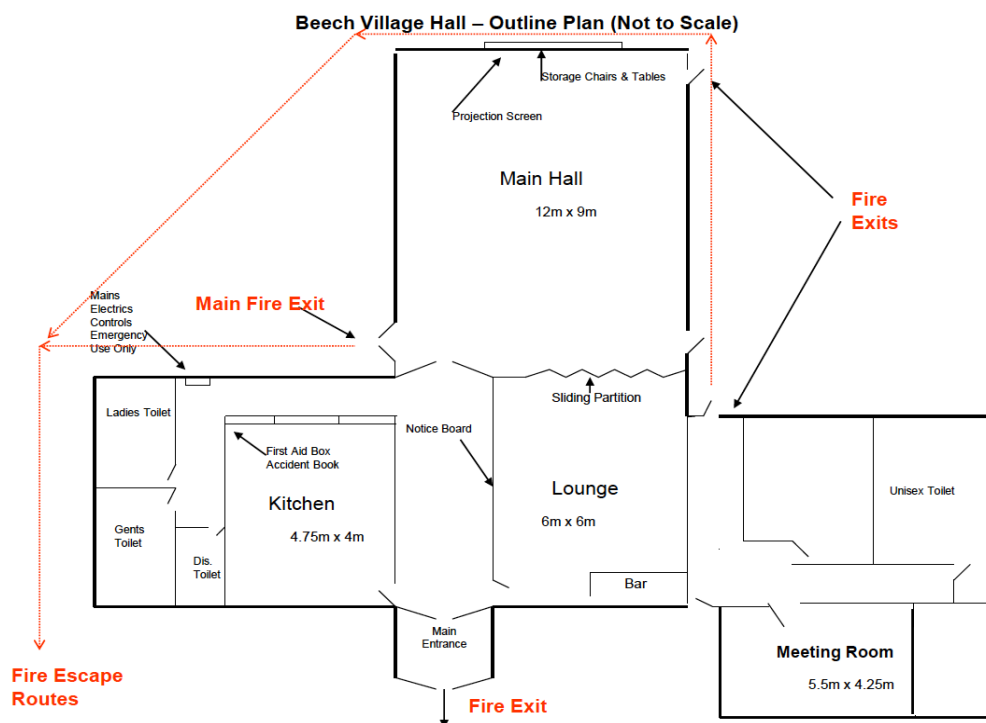
Room hire rates (Commercial (7) hire please add 15%)	Rate per hour	
	Monday to Thursday	Friday to Sunday
Main Hall	£18	£20
Main Hall and Lounge / Bar	£22	£25
Lounge / Meeting Room	£13	£15
Annexe Meeting Room	£10	£12

How to book:

Please visit: www.beechvillage.org.uk/booking-the-hall/ or email us at: bookings@beechvillage.org.uk

Please note:

1. A minimum booking slot of 3 hours and this must include setting-up and tidy up time.
2. The hirer must be over the age of 21 and in attendance throughout the booking
3. A Security Deposit may be required to reserve the booking and will act as a security deposit to cover any losses or damages. The deposit will normally be returned within 10 working days after the event.
4. The Annexe Meeting Room has no wheelchair access or kitchen facility
5. Beech Residents are eligible for a 25% discount on room hire charges
6. A 15% Commercial surcharge applies where the objective of the hire is to make profit or the hirer is a commercial or public sector organization. This excludes Registered Charities, Voluntary Organisations and Clubs.



Subject to our terms and conditions: <https://www.beechvillage.org.uk/booking-the-hall/>

Registered Charity 301738 / VAT registration number: 937 6019 08 / Ver 3.2 5-Oct-22

2023 Hire Charges (including VAT)

Wedding Reception Package



Hire of the Main Hall and Lounge/Bar	Set up on Friday evening, 1800 – 2300, 5 hours	
	Wedding Reception on Saturday, 0900 – 2300, 14 hours Please note that <ul style="list-style-type: none"> • Music, recorded or live, must cease and any bar close by 22:30 • The premises including the car park, must be vacated by 23:00 hours. 	
	Tidy up on Sunday, 0900 – 1200, 3 hours	
Catering facilities	Use of all kitchen facilities. Includes cooker, microwave, heated cupboard, hot water dispenser, dishwasher & fridge / freezer Up to 100 settings of dinner and dessert plates, cups, saucers, side plates and cutlery.	£1200
Sound & lighting	Evening dance package: Our in house music system with laser lights and haze (mist) provides the party 'club' experience and it could save you the outlay of hiring a DJ and or/their equipment. PA system: Use of radio microphone - for announcements /commentaries	
Tables and chairs	15 tables 100 chairs	

Please note:

1. Hire charge excludes glasses and table and room decorations
2. A £200 deposit is required to reserve the booking and will act as a security deposit to cover any losses or damages. The deposit will normally be returned within 10 working days after the event.
3. Wedding Reception bookings includes non-exclusive use of the Village Green (weather permitting, it will be mowed prior to the event during the Spring - Summer period)

2023 Hire Charges (including VAT)

Evening Party package



Please note:

Hire of the Main Hall and Lounge/Bar

Friday or Saturday evening, 1800 – 2300, 5 hours

Please note that:

- Music, recorded or live, must cease and any bar close by **22:30**
- The premises including the car park, must be vacated by **23:00** hours.

Tidy up on Sunday, 0900 – 1100, 2 hours

Catering facilities

Use of all kitchen facilities. Includes cooker, microwave, heated cupboard, hot water dispenser, dishwasher & fridge / freezer
Up to 100 settings of dinner and dessert plates, cups, saucers, side plates and cutlery.

£275

Sound & lighting

Evening dance package: Our in house music system with laser lights and haze (mist) provides the party 'club' experience and it could save you the outlay of hiring a DJ and or/their equipment.

Tables and chairs

15 tables
100 chairs

-
1. Hire charge excludes glasses and table and room decorations
 2. A Security Deposit may be required to reserve the booking and will act as a security deposit to cover any losses or damages. The deposit will normally be returned within 10 working days after the event.
 3. Young adult and Teenage Parties (16-21) are subject to approval and supervision

2023 Hire Charges (including VAT)

Children's Party Package



Hire of the Main Hall and Lounge/Bar Up to 4 hours for:

- Set up
- Party
- Tidy up

Catering facilities Use of all kitchen facilities. Includes cooker, microwave, heated cupboard, hot water dispenser, dishwasher & fridge / freezer.

£120

Tables and chairs 10 tables
60 chairs

Sound & lighting Children's party pack: Enjoy spectacular coloured, moving laser lights, for play and dance at a moderate volume. Connection via Bluetooth or 3.5mm jack input to phone, tablet or computer.

Please note:

1. Soft play equipment is NOT included and for illustration purposes only
2. Alternatively, you can configure your own Children's Party options using our online booking system:
 - a. Prices start from £60 for a minimum of 3 hours hire of the Main Hall only for set up, party and tidy up.
3. Bouncy castles
 - a. Height is not normally an issue (at the partition end of the hall). The Height of the cross beam from floor is 9'3",
 - b. The gap from partition to cross beam to the partition wall is 4 metres (13' 1.5").
 - c. Please see our website for bouncy castle rental companies
 - d. Please remember to review your insurance cover as the village hall does not provide cover for bouncy castles and their usage.

2023 Hire Charges (including VAT)

Additional options for room only hire

Sound and lighting

A professional sound, light and projection system. Connect via Bluetooth or 3.5mm jack input to phone, tablet or computer.



Background music system: Perfect for dinner parties or events where background music is all that is needed. £25

Children's party pack: Enjoy spectacular coloured, moving laser lights, for play and dance at a moderate volume. £60

Evening dance package: Our in house music system with laser lights and haze (mist) provides the party 'club' experience and it could save you the outlay of hiring a DJ and or/their equipment £100

PA system and screen: Connection to in-house overhead projector (VGA or HDMI) for playing videos or presentations £30

PA system: Use of radio microphone - for announcements or commentaries £20

Catering facilities



Use of all kitchen facilities. Includes cooker, microwave, heated cupboard, hot water dispenser, dishwasher, fridge / freezer and up to 60 cups, saucers, side plates and cutlery. £35

Dinner and dessert plates plus cutlery for 20 settings. Up to 5 increments to a maximum of 100 settings £5 per 20 settings

Additional cups, saucers and side plates plus cutlery for 20 settings. Up to 2 increments to a maximum of 100 settings £5 per 20 settings

Tables & chairs

Room hire includes:	Tables	Chairs
Main Hall	10	60
Lounge	2	10
Main Hall & Lounge	10	60

Additional tables up to a maximum of 15. £6 each
Additional chairs up to a maximum of 100. £0.6 each

Skittle Alley



Skittle Alley for use in Main Hall £30
Set up of skittle alley £20